

**Class registration and enrollment policy:**

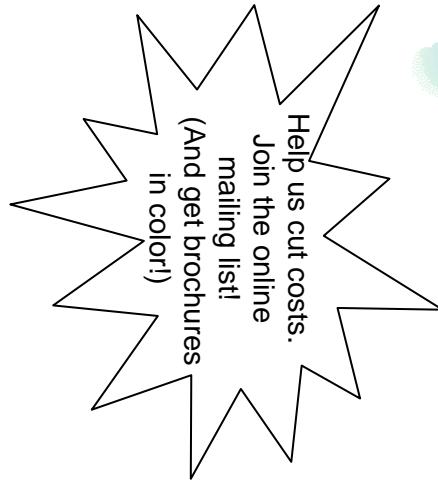
Policy applies to all classes, including kids' classes. Pre-registration for classes is required. Full payment is due at the time of registration. Class fees include materials unless otherwise noted. Tools are not included. You can register and pay for classes via phone or online. Photos do not represent actual finished product and are provided for reference only. Color options, materials and/or kits will be supplied at the beginning of class.

You are required to bring your own tools to class. A list of tools will be supplied when you register. If you do not have tools, you can rent them during class for \$2.00. If you choose to purchase them after the class, the \$2.00 rental fee will be credited against the purchase.

If the minimum required number of students of 3 per class is not met, we reserve the right to cancel and/or reschedule the class. If you cannot make the rescheduled class time or if we do not reschedule the class, we will credit your fee against a class of your choice within 60 days of the cancelled class. There are **no refunds on classes.**

**Discount!!**

\*Register and pay for one class, get \$10 off any second class on the same schedule! (Does not include kids' classes.) You do not have to sign up for both classes at the same time to get the discount.\*



Busy Beaders  
5043 Tuttle Crossing Blvd.  
#105  
Dublin, OH 43016



November/  
December  
2009  
Class Schedule  
(614) 210-1051  
The Mall at Tuttle  
Crossing

Located on the lower level across from Lens Crafters between GNC and Eyebrowz



[www.busybeaders.biz](http://www.busybeaders.biz)  
[amy@busybeaders.biz](mailto:amy@busybeaders.biz)

**\*\*View, Register & Pay for classes online at [www.shopbusybeaders.com](http://www.shopbusybeaders.com)\*\***

## Beading Fundamentals

We will go over the different tools and materials used in jewelry making. One bracelet and one pair of earrings will be completed.

Class Fee: \$28.00 (\*includes booklet)

Monday, November 2 at 6:30 pm

Saturday, December 5 at 4:30 pm



### Beads & Chain Necklace

Learn how to incorporate chain with beads to make a stylish necklace.

Class Fee: \$28.00

Saturday, November 7 at 4:30p

Friday, December 11 at 6:30p



### Brick Stitch Bangle

Learn the brick stitch to create this patterned bracelet.

Class Fee: \$30.00

Wednesday, Nov 11 at 6:30 pm

Wednesday, Dec 2 at 6:30 pm



### Brick Stitch Turkey

Learn brick stitch to make this one of a kind pendant.

Class Fee: \$28.00

Monday, November 9 at 6:30p

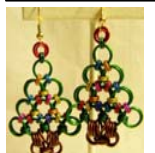


### Byzantine Chain Maille Bracelet

Learn a beginner chain maille weave. Class Fee: \$40.00

Tuesday, Nov 17 at 6:30 pm

Thursday, Dec 17 at 6:30 pm



### Chain Maille Trees

Use chain maille to create these holiday themed earrings.

Class Fee: \$30.00

Wednesday, Nov 25 at 6:30p

Wednesday, Dec 16 at 6:30p



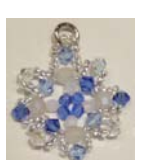
### Christmas Ornament

Learn a popular netting technique to make this fabulous Christmas Ornament.

Class Fee: \$35.00

Friday, November 13 at 6:30 pm

Wednesday, December 9 at 6:30 pm




### Crystal Snowflake Pendant

Use Swarovski crystals and Czech firepolish beads to weave together this "cool" pendant.

Class Fee: \$28.00

Tuesday, November 10 at 6:30p

Thursday, December 3 at 6:30p

 = Not offering on next schedule



### Herringbone Bracelet

Create a beautiful wire wrapped bracelet using a herringbone weave.

Class Fee: \$35.00

Tuesday, November 24 at 6:30 pm

Tuesday, December 22 at 6:30 pm



### Holiday Earring Basics

Learn to make 3 pair of Holiday themed earrings.

Class Fee: \$30.00

Friday, November 6 at 6:30 pm

Friday, December 4 at 6:30 pm



### Love Knot Chain Maille Bracelet

Learn a unique chain maille technique and how to make beaded links to create a bracelet.

Class Fee: \$40.00

Tuesday, November 3 at 6:30 pm

Tuesday, December 15 at 6:30 pm



### Micro-Macramé Snowflake Ornament

Use micro-macramé to make this beautiful ornament.

Class Fee: \$30.00

Monday, November 30 at 6:30p

Monday, December 7 at 6:30p



### Mokumé Gané

Learn this fascinating technique using polymer clay to create a bangle bracelet.

Class Fee: \$30.00

Monday, November 16 at 6:30 pm

Monday, December 14 at 6:30 pm



### Orbital Chain Maille

Learn a beginner chain maille technique to make this unique bracelet.

Class Fee: \$35.00

Wednesday, Nov 18 at 6:30 pm

Monday, December 28 at 6:30 pm



### Polymer Clay Basics

Learn to work with polymer clay, make a Skinner Blend and create rolled beads in class.

Class Fee: \$30.00

Wednesday, November 4 at 6:30 pm

Wednesday, December 23 at 6:30 pm



### RAW Tennis Bracelet

Learn basic Right Angle Weave (RAW) to make this stunning "tennis bracelet" with Swarovski crystals and seed beads.

Class Fee: \$35.00

Monday, Nov. 23 at 6:30 pm

Monday, Dec. 21 at 6:30 pm



### RAW (2-needle) Bracelet

Use 2-needle Right Angle Weave (RAW) to

make this fantastic bracelet. Class Fee: \$35.00

Thursday, November 5 at 6:30p

Tuesday, December 8 at 6:30p



### Swarovski Heart Pendant

Learn how to make this unique heart pendant using Swarovski crystals.

Class Fee: \$35.00

Saturday, November 21 at 4:30 pm

Saturday, December 19 at 4:30 pm

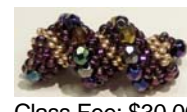


### Tubular Bead Crochet

**Must** know how to crochet and bring size 6 steel and size F hooks to class. Prep-work will be required. Class Fee: \$35.00

Friday, November 20 at 6:30p

Friday, December 18 at 6:30p



### Tubular Peyote Stitch

Learn tubular peyote stitch with different sized beads to make a spectacular focal bead.

Class Fee: \$30.00

Thursday, November 12 at 6:30p

Thursday, December 10 at 6:30p



### Wire Jig Trees

Use a wire jig and beads to make these holiday themed earrings. Class Fee: \$25.00

Saturday, November 14 at 4:30 pm

Saturday, December 12 at 4:30 pm



### Wire Wrapped Pendant

Create this stunning pendant with wire and beads.

Class Fee: \$35.00

Thursday, November 19 at 6:30 pm

Tuesday, December 29 at 6:30 pm

 = New Class!

**\*\*Please check out our website for our selection of Kids' Classes!\*\***